



# Extra Wide Barrier

Fits opening size 73cm to 194cm



**IMPORTANT! READ AND FOLLOW  
THESE INSTRUCTIONS CAREFULLY  
AND KEEP FOR FUTURE REFERENCE.**

This product complies with safety standard EN12227:2010 when in playpen formation.

**AFTER SALES SUPPORT**



[info@childsafetyhelp.com](mailto:info@childsafetyhelp.com)



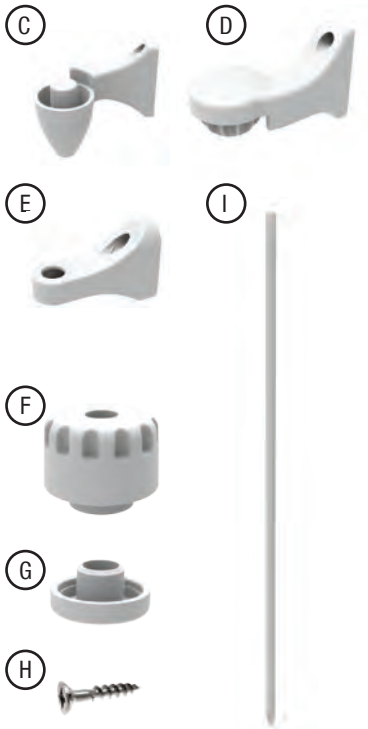
1300 467 068

Product Code: 2748

# Parts List

---

- A. 2x Barrier panels (Panel A)
- B. 1x Gate (Panel B)
- C. 2x Top underside wall bracket
- D. 2x Top topside wall bracket
- E. 2x Lower wall bracket
- F. 2x Top cap
- G. 2x Bottom cap
- H. 8x Screws
- I. 4x Corner tubes



If any parts are missing do not attempt to use your Extra Wide Barrier. Please call after sales support to obtain replacements. Only use parts supplied by manufacturer with your Extra Wide Barrier.

# Safety Information

---

## **WARNING**

### **WHEN USED AS A SAFETY BARRIER:**

**WARNING** - Incorrect fitting or positioning of this safety barrier can be dangerous.

**WARNING** - Do not use the safety barrier if any components are damaged or missing.

**WARNING** - Never install this product on glass doors or windows.

**WARNING** - Stop using the product if the child is able to climb or dislodge barrier.

**WARNING** - A maximum of 3 panels including gate can be used as a safety barrier.

**WARNING** - Danger to older children if climbing over the barrier.

**WARNING** - Regularly check that the barrier is properly fixed and secure.

**WARNING** - Any additional or replacement parts should only be obtained from after sales support call 1300 467 068.

**WARNING** - This safety gate is suitable for openings from 73cm to 194cm.

### **WHEN USED AS A PLAYPEN:**

**WARNING** - This safety barrier is intended for use with children 6 to 24 months or small to medium pets.

**WARNING** - Do not use the playpen without the PERMA Products play mat base.

**WARNING** - Do not place the playpen close to an open fire or other heat source.

**WARNING** - Do not leave anything in the playpen which may provide a foothold or create a danger of suffocation or strangulation.

**WARNING** - Check regularly that all assembly fittings are tightened properly.

**WARNING** - Ensure that the playpen is fully erected and all the locking mechanisms engaged before placing your child in this playpen.

**WARNING** - Do not use the playpen if any part is broken, torn or missing and use only spare parts approved by manufacturer, accessories which are not approved by manufacturer shall not be used.

**WARNING** - Check regularly that all assembly fittings are tightened properly.

### **CLEANING:**

**WARNING** - Clean using a damp cloth or sponge and a mild detergent. Towel or air dry.

# General Assembly

---

**Warning: Adult assembly required. Keep small parts out of reach of children and safely dispose of packaging.**

1. Remove Extra Wide Barrier from packaging and place upright on floor.
2. Unfold the Extra Wide Barrier and place in desired location.

Select the appropriate fixing method from the following list.  
This barrier must only be fixed to a solid and secure surface.

**Wood Fixing**

Drill 2mm pilot holes and use the wood screws provided screwing directly into the wood.

**Hard Wall Fixing**

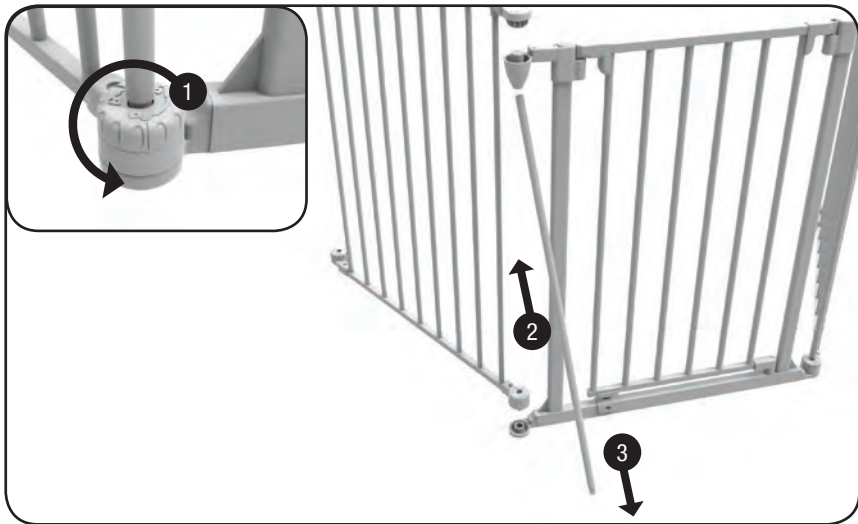
Drill 6mm(1/4") holes and insert the wall plugs provided before screwing into these.

**Plaster Board Walls**

Plaster board walls require expandable wall plugs( not supplied), these are available at all DIY retailers.

## Adding and Removing Panels

---



**To Remove Unwanted Panels**

Turn base knob anti-clockwise to the unlocked position, pull up on the corner tube and slide the bottom of the tube out from the base. With the corner tube removed you can lift and remove the unwanted panel.



### Adding Extra Panels

**Note: Two of the same panels cannot be joined together, Panel A will only connect to Panel B.**

Align Panel A and Panel B, place the corner tube into the top hole first, pull the corner tube up so you can locate the bottom of the tube into the bottom hole



Turn the base knob in a clockwise direction to lock panels.

# Panel A Wall Assembly

## Expanded:

Parts Required:

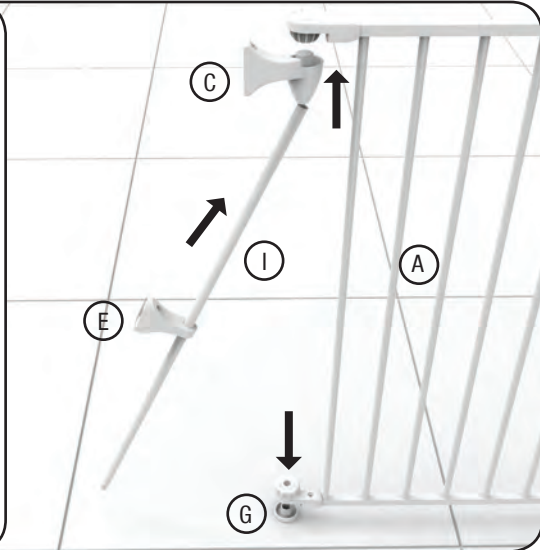
1x Top Underside Wall Bracket



1x Lower Wall Bracket



1x Bottom Cap



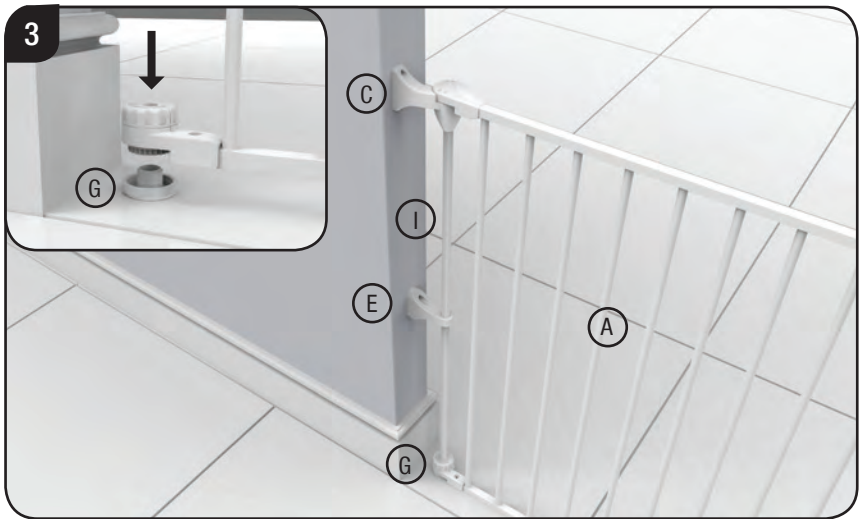
NOTE: Place Lower Wall Bracket (E) over Corner Tube (I) before assembly.

## Assembled:





1. Mark screw positions with pencil.
2. Disassemble and screw in Top Underside Wall Bracket (C) and Lower Wall Bracket (E).



3. Reassemble Panel A, Corner Tube (I) and Bottom Cap (G) into Top Underside Wall Bracket (C) and Lower Wall Bracket (E).

# Panel B Wall Assembly

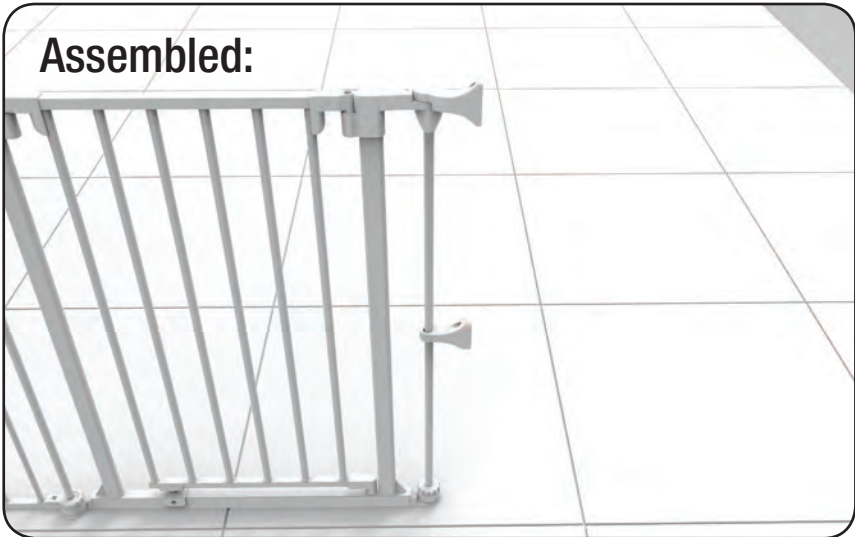
**Expanded:**

**Parts Required:**

- 1x Top Topside Wall Bracket
- 1x Lower Wall Bracket
- 1x Top Cap

Labels in diagram: (B), (I), (D), (E), (F)

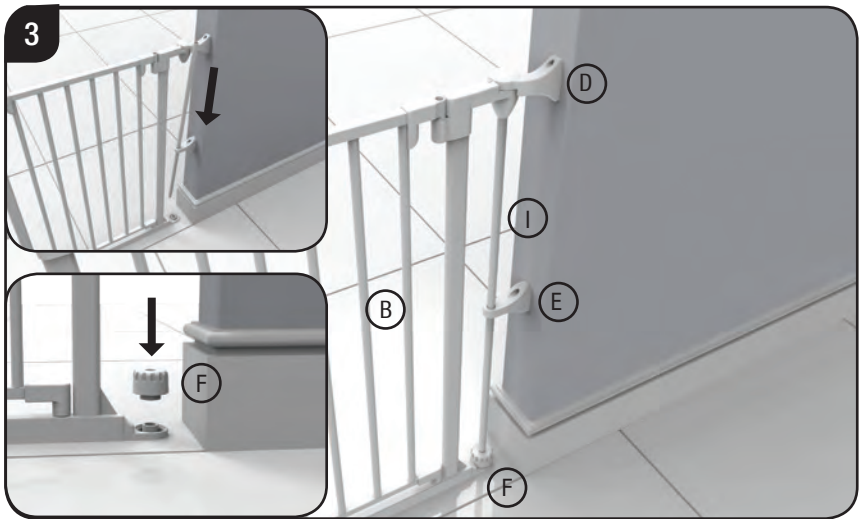
NOTE: Place Lower Wall Bracket (D) over Corner Tube (H) before assembly.







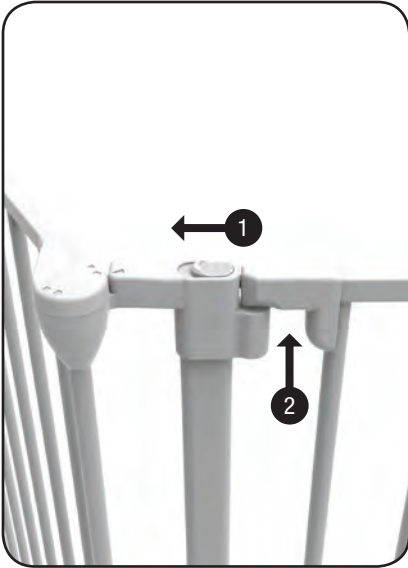
1. Mark screw positions with pencil.
2. Disassemble and screw in Top Topside Wall Bracket (D) and Lower Wall Bracket (E).



3. Reassemble Panel A, Corner Tube (I) and Top Cap (F) into Top Topside Wall Bracket (D) and Lower Wall Bracket (E).

# Operation

---



Using one hand place thumb on the button and grip gate with fingers. Slide button and lift gate, then open gate in either direction, when released gate will swing closed automatically. Always check gate is properly closed. Up to 3 panels including the gate may be used in open configurations providing the 2 end panels are securely fixed to a wall with the fixings provided.



# Warranty Certificate

---

Congratulations! You have made an excellent choice of this quality product. Our commitment to quality also includes our service. Should you, contrary to expectations, experience defects due to manufacturing faults, we will provide you with a warranty against defects as follows:

## Warranty

The product is guaranteed to be free from defects in workmanship and parts for a period of 12 months from the date of purchase. Defects that occur within this warranty period, under normal use and care, will be repaired, replaced or refunded at our discretion. The benefits conferred by this warranty are in addition to all rights and remedies in respect of the product that the consumer has under the Competition and Consumer Act 2010 and similar state and territory laws.

Our goods come with guarantees that cannot be excluded under the Australian Consumer Law. You are entitled to a replacement or refund for a major failure and for compensation for any other reasonably foreseeable loss or damage. You are also entitled to have the goods repaired or replaced if the goods fail to be of acceptable quality and the failure does not amount to a major failure.

## Proof of Purchase

This warranty is valid for the original purchase and is not transferable. Please keep your purchase docket, tax invoice or receipt as the best proof of purchase, and as proof of date on which the purchase was made.

## Extent of Warranty

This warranty is limited to defects in workmanship or parts. All defective products or parts will be repaired or replaced. This warranty does not cover consumable items.

## Normal Wear and Tear

This warranty does not cover normal wear and tear to the products or parts.

## Exclusions

This warranty does not cover:

- Any defects caused by an accident, misuse, abuse, improper installation or operation, lack of reasonable care, unauthorised modification, loss of parts, tampering or attempted repair by a person not authorised by the distributor.
- Any product that has not been installed, operated or maintained in accordance with the manufacturer's operating instructions provided with the product.
- Any product that has been used for purposes other than domestic use.

## To Make a Claim

If a defect in the goods appears within 12 months, you are entitled to claim a warranty, please contact or send all warranty claims to:

PERMA Products  
info@childsafetyhelp.com  
1300 467 068

When making a return, please ensure the product is properly packaged so as to ensure that no damage occurs to the product during transit.

Please provide the original or a copy of the proof of purchase. Also please make sure you have included an explanation of the problem.