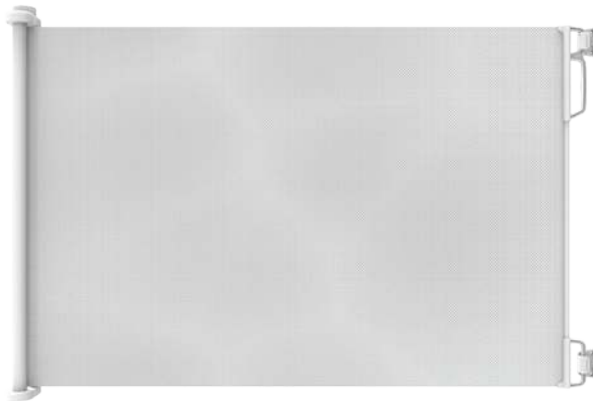




Outdoor

Retractable Gate

Fits openings up to 71" (180cm)



**IMPORTANT! READ AND FOLLOW
THESE INSTRUCTIONS CAREFULLY
AND KEEP FOR FUTURE REFERENCE.**

This product complies with safety standard ASTM F1004-10.

AFTER SALES SUPPORT

 info@childsafetyhelp.com

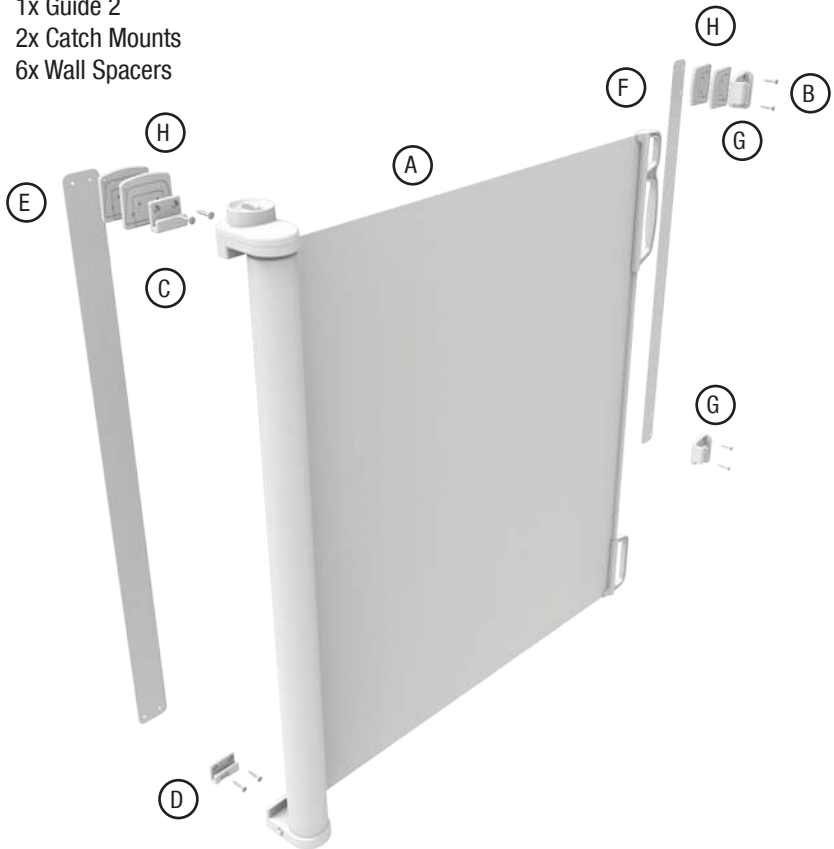
Product Code: 2741, 2756

For Installation video, visit
www.permachildsafety.com/outdoor-retractable-gate-installation-video



Parts List

- A. Gate Assembly
- B. 8x Screws & Wall Plugs
- C. 1x Upper Gate Mount
- D. 1x Lower Gate Mount
- E. 1x Guide 1
- F. 1x Guide 2
- G. 2x Catch Mounts
- H. 6x Wall Spacers

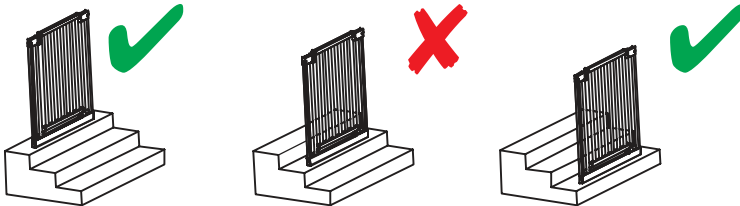


If any parts are missing do not attempt to use your Outdoor Retractable Gate. Please call after sales support to obtain replacements. Only use parts supplied by manufacturer with your Outdoor Retractable Gate.

Safety Information

WARNING

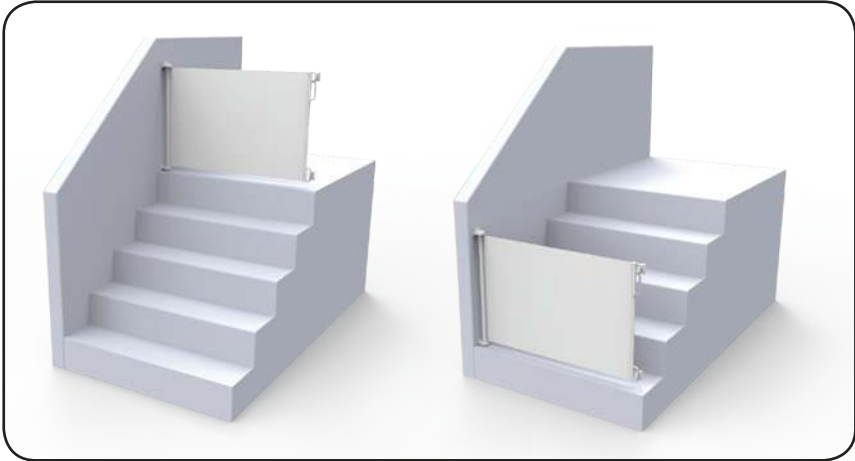
- To prevent serious injury or death, securely install gate or enclosure and use according to manufacturer's instructions.
- Never leave child unattended when using this product.
- Incorrect installation can be dangerous.
- Do not use the safety barrier if any components are damaged or missing.
- The safety barrier must not be fitted across windows.
- Never use with a child able to climb over or dislodge the gate or enclosure.
- Danger to older children if climbing over the product.
- Never install this product on glass doors. Install this product against reliable doors or walls.
- If the product is used at the top of stairs, in order to prevent child climbing downstairs, it should be positioned on the top step.
- If the product is used at the bottom of stairs, in order to prevent child climbing upstairs, it should be positioned on the lowest step.



- Do not put any goods which can be grabbed by children or pets near this product to prevent injury.
- Before using this product, carefully inspect for any loose parts and whether any parts needs to be tightened.
- Make sure the product to be installed is horizontal and flat on the floor.
- This product is intended for use with children from 6 to 24 months or small to medium pets
- Regularly check that the safety barrier is properly installed and secure.
- Any additional or replacement parts should be obtained from after sales support.
- Barrier must be fitted between rigid surfaces such as plaster board, timber or hardwall.
- Use only with the locking/latching mechanism securely engaged.

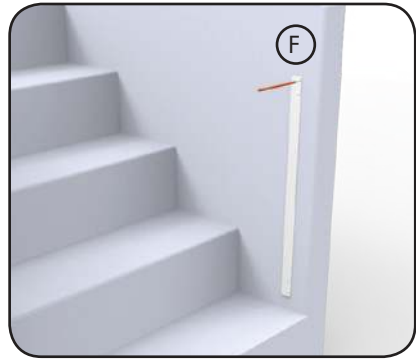
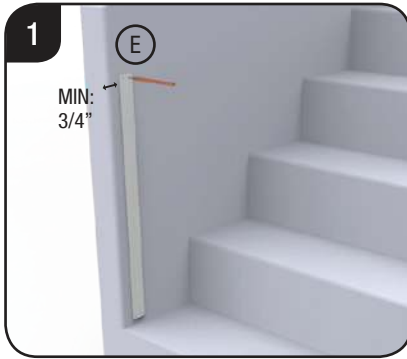
Installation

Important: Gate must be installed in a structurally sound opening. Ensure mounting surface (wall, door frame, stair posts, etc.) is strong, rigid and has an even surface.



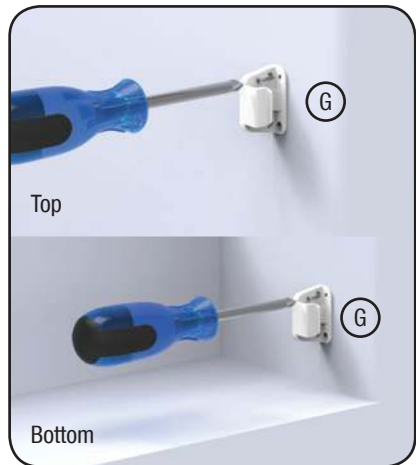
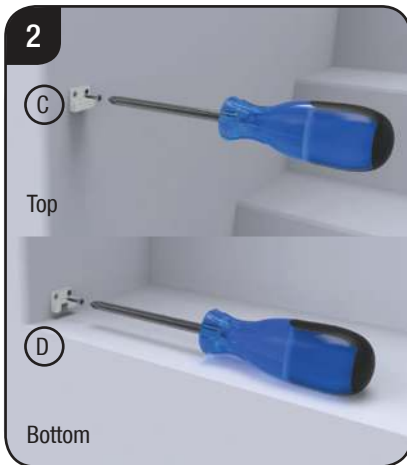
If using gate on a stairway, it must be placed either on the top step or on the lowest step at the bottom. To install you will need a Phillips screwdriver, pencil, level and drill.

Installation Inside Opening or Doorway

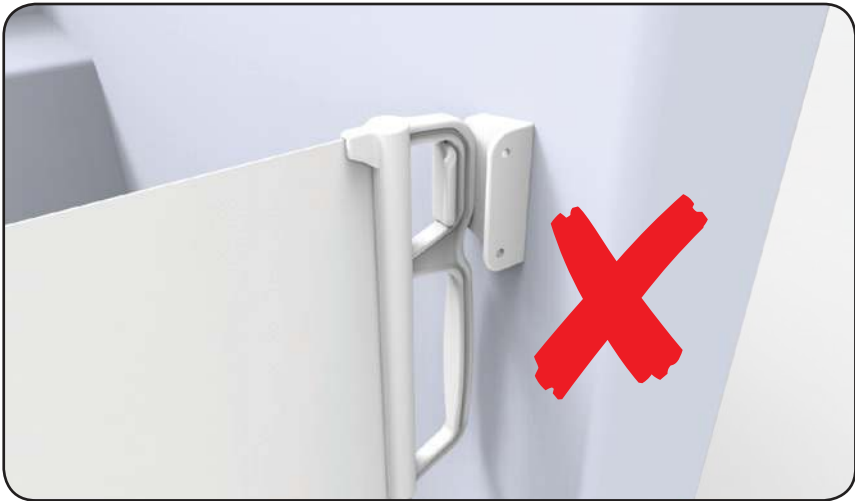


1. Screws provided are for mounting directly into wood. If mounting into brick, drywall or other surfaces use appropriate hardware, note that drilling a pilot hole may be necessary. Hold guide 1 (E) vertically and completely outstretched against mounting surface with the end marked "FLOOR" even with the floor. **Note: leave 3/4" (2cm) between guide (F) and the edge of the opening to ensure gate won't overhang edge.**

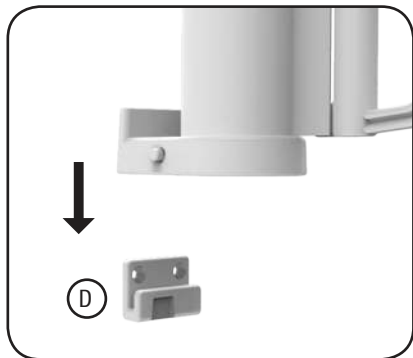
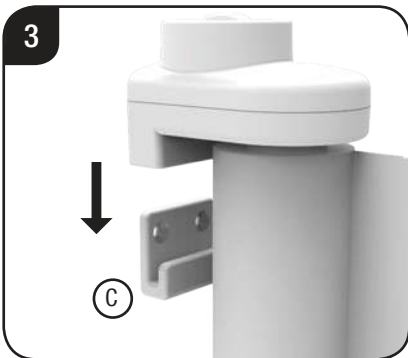
Mark screw hole positions. Remove the template. Repeat process for Guide 2 (F).



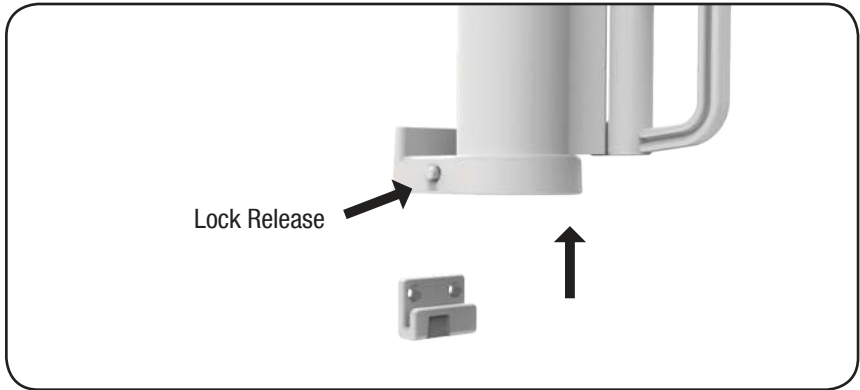
2. Align each mount in its correct position, use a Phillips screwdriver to tighten screws till each mount is secure.



CAUTION: Incorrect installation of catch mount inside opening can be dangerous.

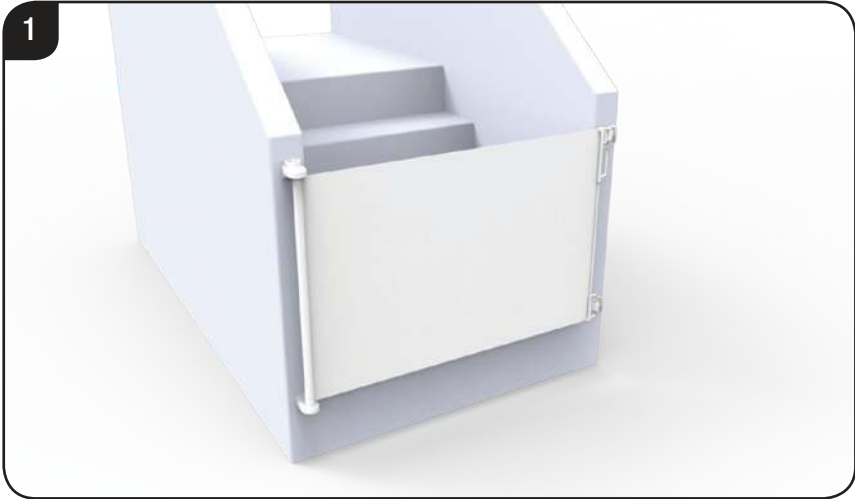


3. Attach Gate Assembly to the Gate Mounts by aligning the gate directly above the mounts and sliding straight down over the mounts. Check that the Gate assembly is flush against the wall and is locked firmly in place.
Note: Lower gate mount (D) has a locking groove.

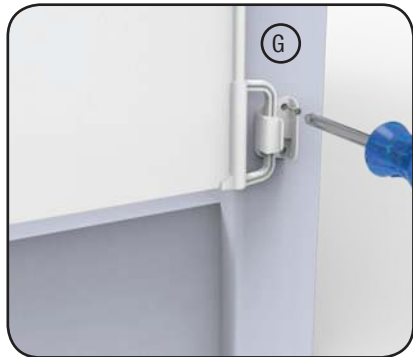
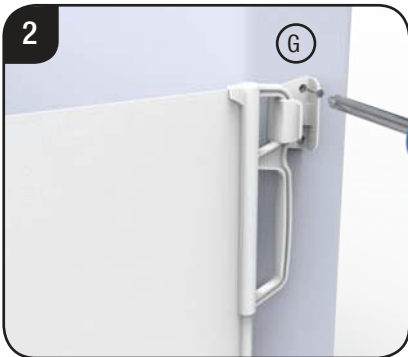


To remove gate from the mounts push and hold the lock release button while sliding the gate upwards.

Installation Outside Opening or Doorway

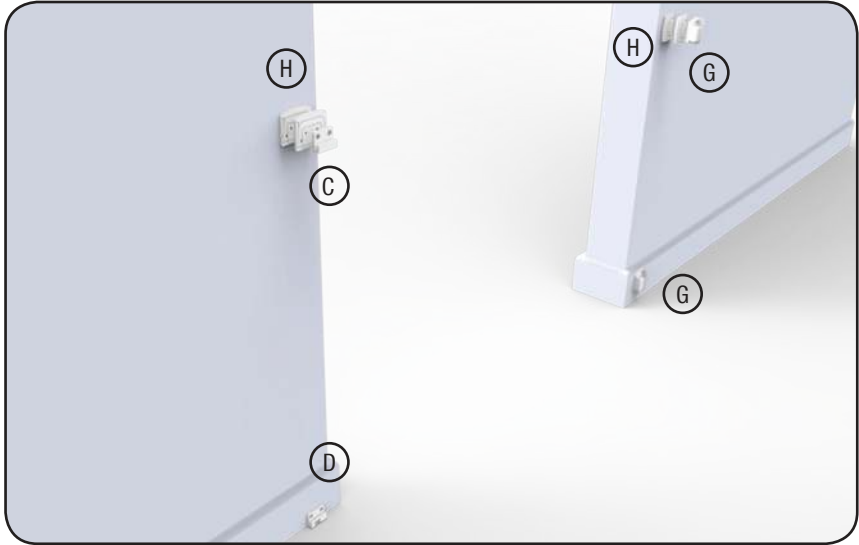


1. Follow step 1 from “Installation Inside Doorway or Opening”.



2. Align each mount in its correct position, use a Phillips screwdriver to tighten screws till each mount is secure.

Installation with Skirting/Baseboard



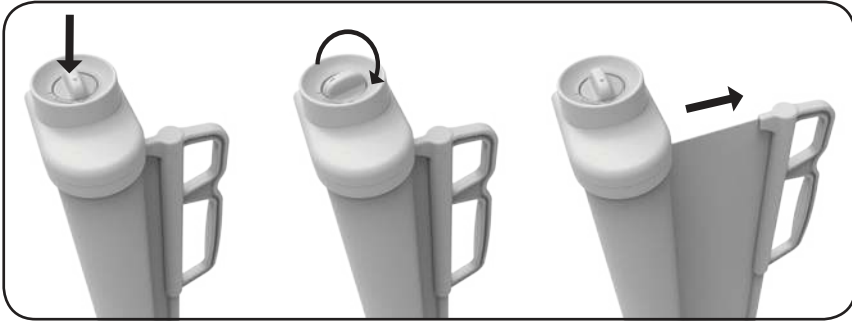
To help correct for the offset of a skirting board or baseboard spacers will be required. Only use spacers for the Upper Gate mount and the Upper Catch (parts C & G).

Measure the width of your skirting/baseboard and use the closest number of spacers to fit this width. Each spacer is 5mm thick.

1. Follow step 1 from "Installation Inside Doorway or Opening".
2. Align spacers and mounts in their correct position, use a Phillips screwdriver to tighten screws till each mount is secure.

Additional wall spacers are available from after sales support.

Operation



To Extend Gate

To unlock the mechanism, simply push down and turn the button clockwise. Release the button and pull the handle toward the catches.

Hook the handle onto the catches ensuring both the top and bottom are aligned.

Note: When gate is retracting always hold the handle and guide the gate evenly back into its original position. Never let go of handle when gate is retracting.

Cleaning Instructions

Use a soft damp cloth simply wipe gate, dry after cleaning.
Do not use chemical or abrasive cleaners.

Warranty Certificate

Congratulations! You have made an excellent choice of this quality product. Our commitment to quality also includes our service. Should you, contrary to expectations, experience defects due to manufacturing faults, we will provide you with a warranty against defects as follows:

Warranty

The product is guaranteed to be free from defects in workmanship and parts for a period of 12 months from the date of purchase. Defects that occur within this warranty period, under normal use and care, will be repaired, replaced or refunded at our discretion.

You are entitled to a replacement or refund for a major failure and for compensation for any other reasonably foreseeable loss or damage. You are also entitled to have the goods repaired or replaced if the goods fail to be of acceptable quality and the failure does not amount to a major failure.

Proof of Purchase

This warranty is valid for the original purchase and is not transferable. Please keep your purchase docket, tax invoice or receipt as the best proof of purchase, and as proof of date on which the purchase was made.

Extent of Warranty

This warranty is limited to defects in workmanship or parts. All defective products or parts will be repaired or replaced. This warranty does not cover consumable items.

Normal Wear and Tear

This warranty does not cover normal wear and tear to the products or parts.

Exclusions

This warranty does not cover:

- Any defects callused by an accident, misuse, abuse, improper installation or operation, lack of reasonable care, unauthorized modification, loss of parts, tampering or attempted repair by a person not authorized by the distributor.
- Any product that has not been installed, operated or maintained in accordance with the manufacturer's operating instructions provided with the product.
- Any product that has been used for purposes other than domestic use.

To Make a Claim

If a defect in the goods appears within 12 months, you are entitled to claim a warranty, please contact or send all warranty claims to:

PERMA Products
info@childsafetyhelp.com

When making a return, please ensure the product is properly packaged so as to ensure that no damage occurs to the product during transit.

Please provide the original or a copy of the proof of purchase. Also please make sure you have included an explanation of the problem.



Outdoor Retractable Gate Warranty Card

Details:

Product Name: Outdoor Retractable Gate

Product Number: 2741, 2756

Your Name: _____

Address: _____

Phone: _____

Email: _____

Date of Purchase: _____

Location of Purchase: _____

We recommend that you keep a copy of your receipt, showing the date of purchase, with this warranty certificate and keep for your reference.

In the event of a product fault, please contact After Sales Support. Please ensure that you have the product details (as shown on this card) at hand so that we are able to respond as quickly and efficiently as possible.

AFTER SALES SUPPORT

 info@childsafetyhelp.com

Product Code: 2741, 2756